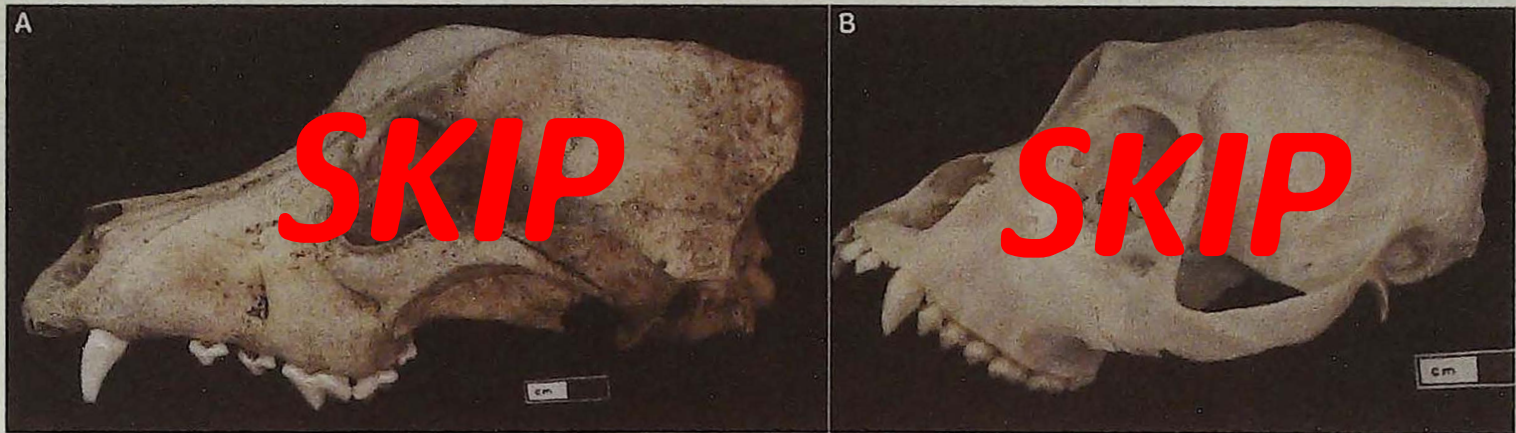


Disregard A-B dog skull and monkey skull

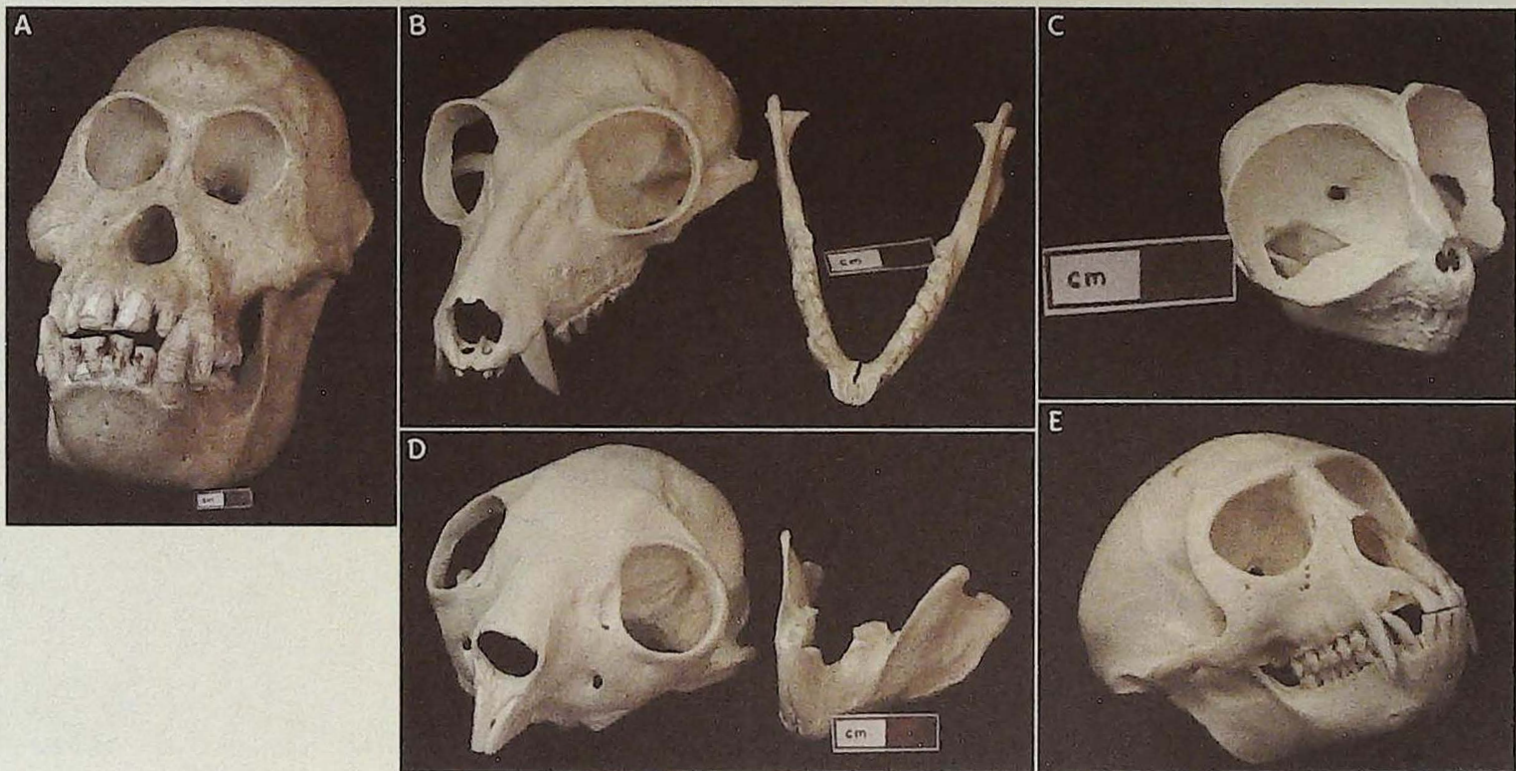


Dog skull

Monkey skull

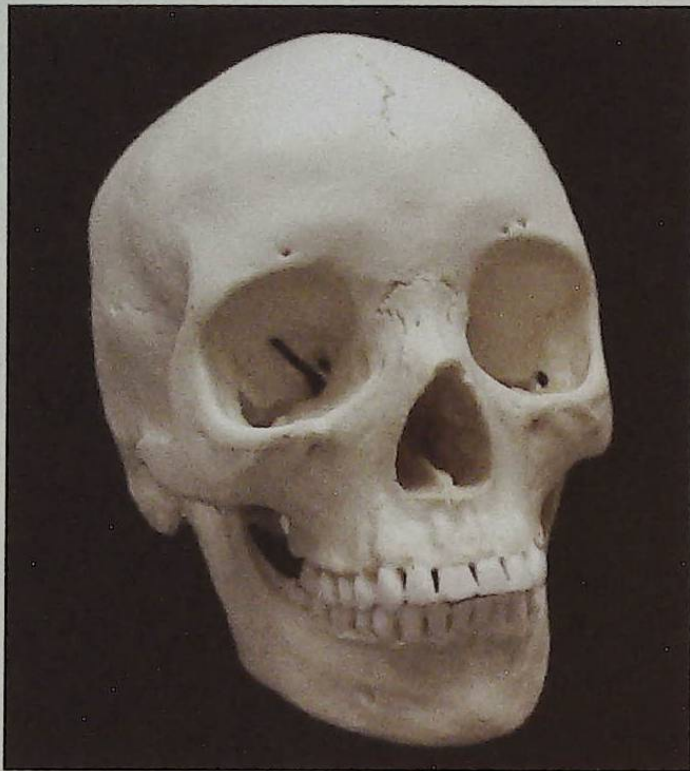
Directions: Complete the charts and also identify A-E as either Strepsirhini or Haplorhini

4. Look at the photos below or your lab specimens and *note the form* of the listed features in the chart below. You will use your answers later to place the specimens into suborders (Strepsirhini and Haplorhini).



SPECIMEN	FUSED MANDIBULAR SYMPHYSIS? (IS THE MANDIBLE ONE BONE OR TWO?)*	CRANIUM SIZE (BRAIN CASE) RELATIVE TO FACE	FULLY ENCLOSED ORBIT?	TOOTHCOMB? (LOWER INCISORS JUT FORWARD)
S or H? A	H	H	H	S
S or H? B	S	S	S	H
S or H? C	H	H	S	S
S or H? D	H	H	H	H
S or H? E	H	S	H	H

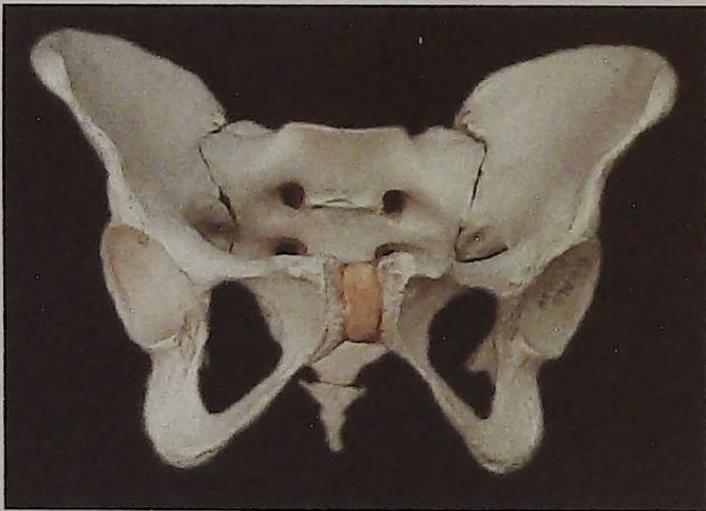
*If a suture line is visible, mandibular symphysis is unfused.



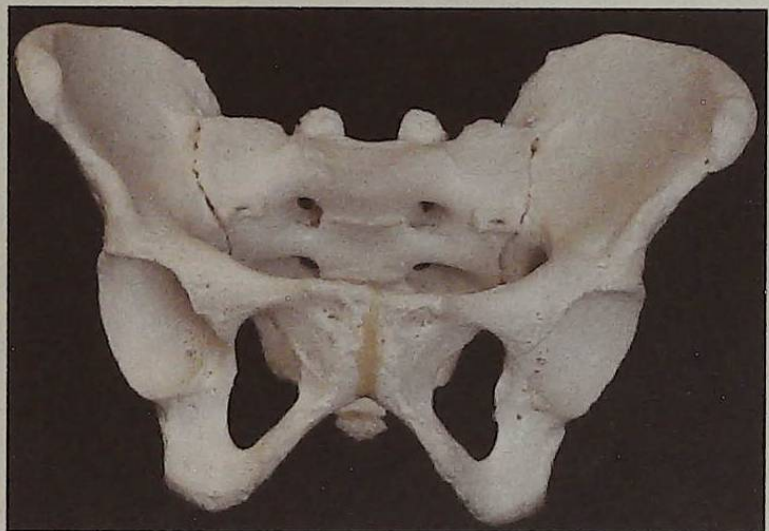
Skull 3

2. Sex three pelvis (either entire pelvis or casts of parts of the pelvis). Fill in the chart, again using the letters M, F, or U. (In the absence of comparative pelvises in your lab, use the photos here. Some of the features listed below may not be observable from the photos.)

FEATURE (USE M OR F)	PELVIS 1	PELVIS 2	PELVIS 3
Sub-pubic arch	F	F	M
Pubic symphysis	F	F	M
Ventral arc	F	F	M
Greater sciatic notch	F	F	M
Pelvic inlet (for entire pelvis)	F	F	M
Total number of Ms	1		
Total number of Fs	2		
Sex designation	FEMALE	FEMALE	MALE



Pelvis 1



Pelvis 2



Pelvis 3